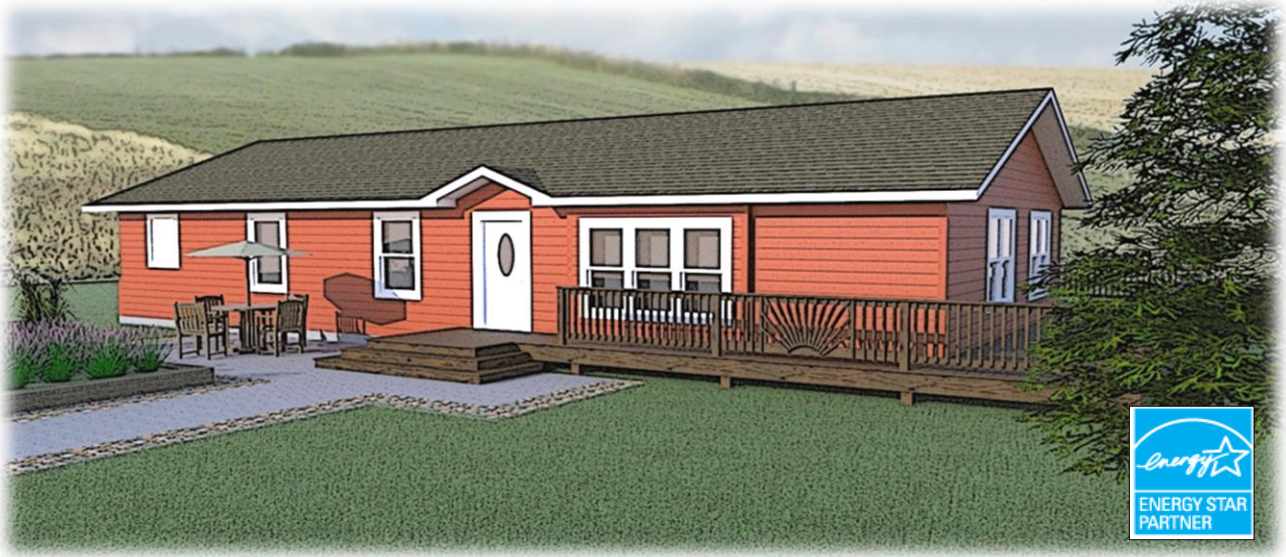


Model Home "A"



The Glen Springs - Craftsman Modular

28 X 60 | 3 Bedroom, 2 Bathroom Rambler | 1650 Sq. Ft.

Energy Star Construction

Crawlspace Package: Furnace, Ductwork and Water Heater Installed

Spacious Wide Open Floor Plan

Vaulted Ceilings Throughout

Raised Panel Doors

French Doors With Glass

Raised Panel Maple Cabinetry

Premium Laminate Countertops

Oil Rubbed Bronze Fixtures and Hardware

LP Smartside Pre-finished Siding and Trim

Living Room Window Seat

Decorator Front Entry Door

Fireplace w/ Tiled Surround

**ALEXANDRIA
HOMES
INC.**

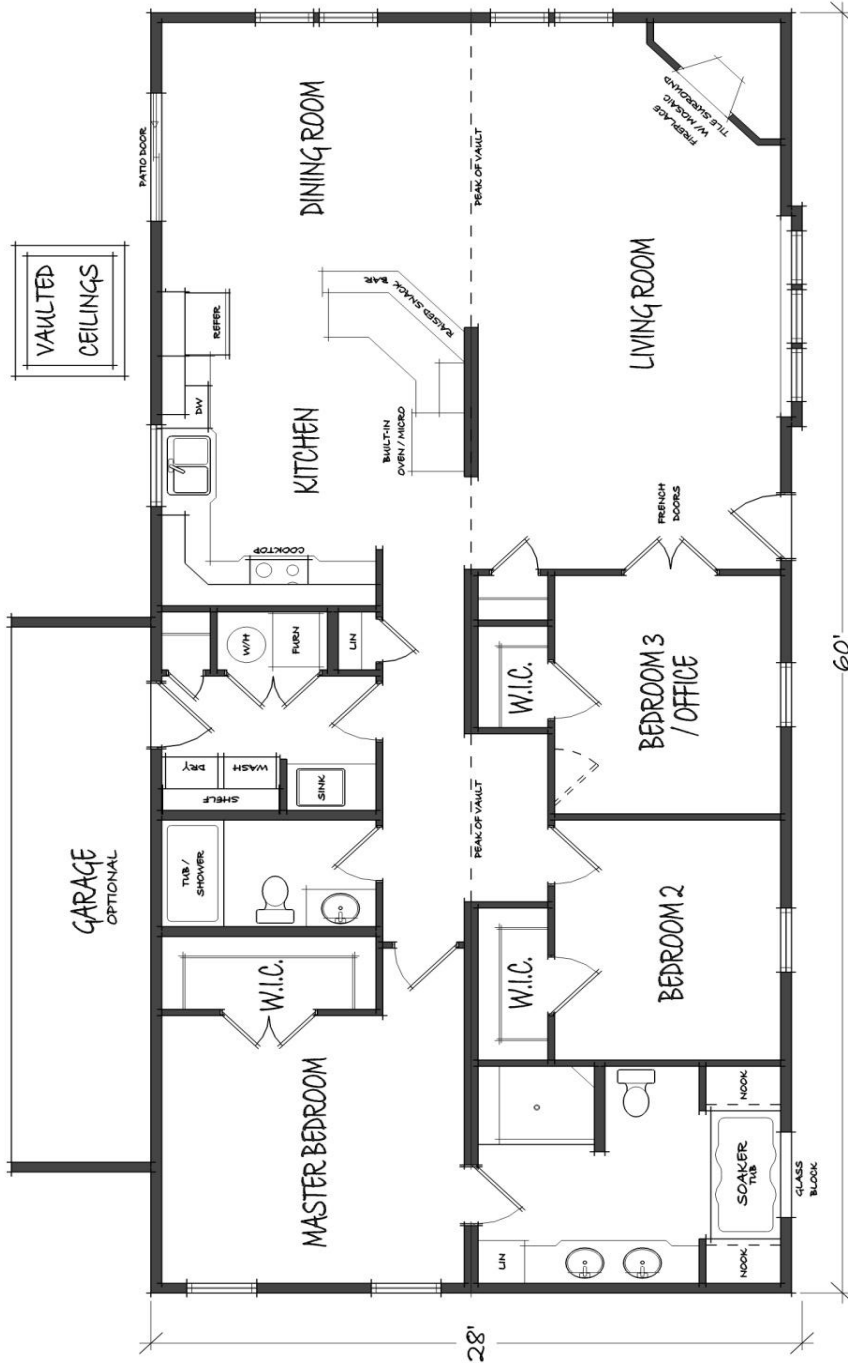
800-364-8824

5745 Hwy. 29 S. - Alexandria, MN

www.AlexandriaHomesInc.com



Notes:



It's your new home. Our expert staff has over 55 years of combined experience in construction, project management and design. We'll walk you through the ins and outs of the design and building process. Set up an appointment today and talk with us about your dream home. See what a difference our experts can make.



Gerry Estrem



Sean Stiras

